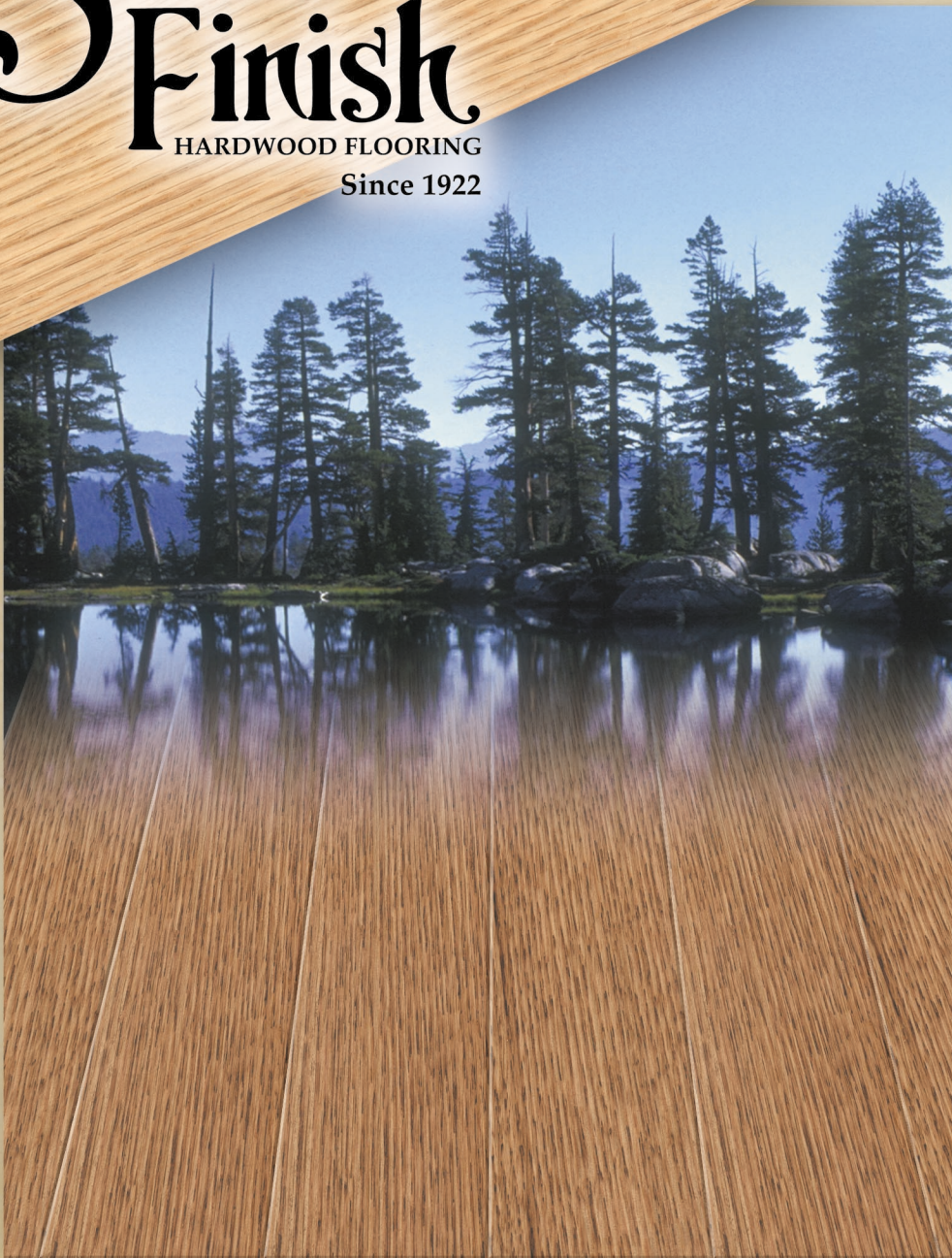


Satin Finish

HARDWOOD FLOORING

Since 1922



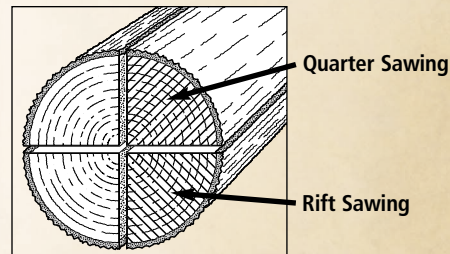
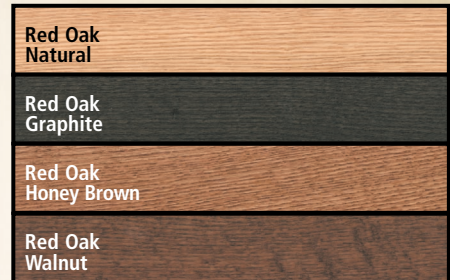
Specification Sheet

Multi-Plank™ Quartercut

Species

Red Oak

Available Colours



Quartercut (quartersawn and/or rift)

hardwood floors are recognized as some of the most beautiful floors in the world. Only the most discerning consumers demand this high quality cut of hardwood. In addition to being tasteful and refined **Multi-Plank™ Quartercut** hardwood flooring has many other significant features:

- Dimensionally more stable
- Provide a more uniform and even wear
- Grain patterns are vertical for a cleaner look

Multi-Plank™ Quartercut has a 30-Year Wear Warranty on the finish.

Product Specifications:

Thickness: 1/2" (12.7mm)
 Width: 3" (75mm) or 3 5/8" (92.08mm)
 Length: 8" (203mm) to 39 1/4" (997mm)
 Carton Length: 42" (107cm)
 Square Ft. per Carton: 18.5 sq. ft. (1.72M²)
 Weight: 32 lbs (14.515kg)
 Cartons per Pallet: 40 cartons
 Square Ft. per Pallet: 740 sq. ft. (68.75M²)
 2-Ply engineered: 1/6" (4mm) top sawn veneer wear layer 30° Sheen.

Product Codes:

Red Oak*		
1/2" x 3"	1/2" x 3 5/8"	
MPQC3PN3	MPQC358PN3	Natural
MPQC3GR3	MPQC358GR3	Graphite
MPQC3HB3	MPQC358HB3	Honey Brown
MPQC3WA3	MPQC358WA3	Walnut

*Other Red Oak colours available on request.

Installation: Multi-Plank™ Engineered Floors can be glued down onto most concrete floors using Multi-Stik™ Adhesive or stapled down on minimum 5/8" plywood on 16" centres, or 3/4" approved OSB chipboard. See installation guide for complete instructions and for recommended pneumatic staplers and equipment.

www.satinfinish.com

To order or for more information:

Toronto Eastern Canada Western Canada
 1-800-26-SATIN 1-800-725-4822 1-800-661-5939

Toronto • Montreal • Vancouver • Calgary



Specifications are subject to change without notice. Colours shown are a representation only. Actual wood flooring may vary in colour and grain.